

Phillip iPhone / Android Mobile Trading Platform



~User Manual~

Updated on November 2011

Table of Content

1	General Information	P.3
1.1	Introduction	P.3
1.2	Benefit of POEMS Mobile	P.3
1.3	System Overview	P.3
1.4	Help Desk	P.3
2	Getting Started	P.4
2.1	Login	P.4
2.2	Menu Page	P.5
2.3	Setting Page	P.7
3	Using the System	P.8
3.1	Trade	P.8
3.1.1	Search Trade	P.8
3.1.2	Trade Submission	P.9
3.1.3	Order Confirmation	P.11
3.2	Order Status	P.12
3.2.1	View Order Status	P.12
3.2.2	Portfolio	P.13
3.3	Top 20	P.14
3.4	Dow Jones News	P.15
3.5	Watchlist	P.16
3.5.1	View Watchlist	P.16
3.5.2	Edit Watchlist	P.17
3.6	Stock Details	P.18
3.7	Announcement	P.19
4	Help	P.20

1. General Information

1.1 Introduction

This service is easy to use and gives investors the power to trade directly to Hong Kong Exchange, all from the convenience of your mobile device. In a dynamic stock market, you need to stay informed, and be in control of your investments whenever and wherever you are.

You can now capitalise on market opportunities with wireless access to real-time trading, live prices, order status and account information. Furthermore, POEMS Mobile also facilitates a safe and secure trading environment.

1.2 Benefit of POEMS Mobile

Be in control anywhere and everywhere! With the latest wireless technology, POEMS Mobile gives you the ability to trade Hong Kong stock market from anywhere in the world*. Thus, you can stay informed and always be in control.

Easy to use with absolute convenience! This service is easy to use, simply login with POEMS account and password. You have the power of wireless access to essential financial services at your fingertips, providing absolute convenience to dynamic investors.

Trade with complete trusts! When you key in your trading account number and POEMS password, POEMS Mobile ensures you are trading in a safe and secure trading environment.

1.2 System Overview

POEMS Mobile can be accessed with 3G or WIFI enabled device. It can be used in countries or territories where operators have roaming agreements with local telecommunication service provider.

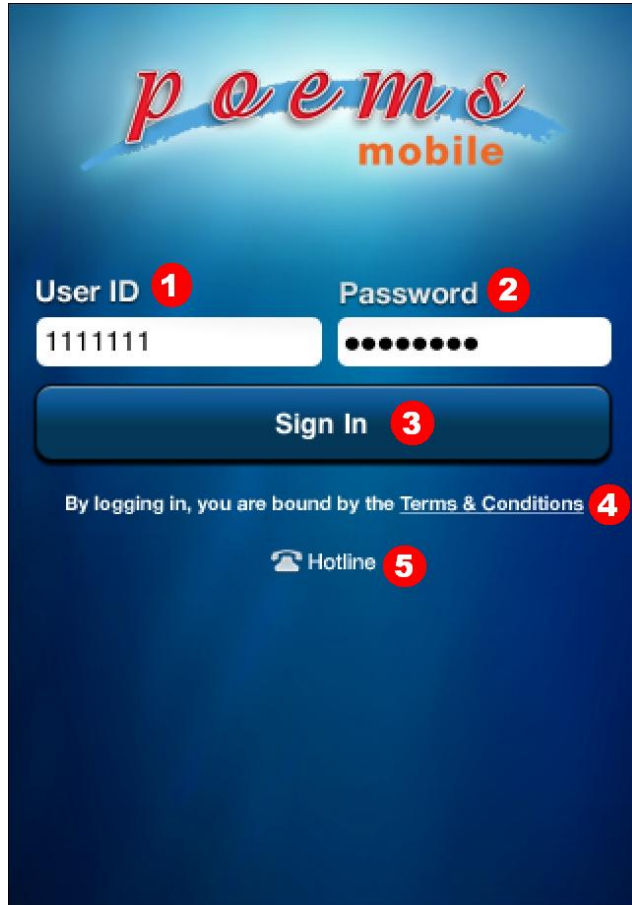
POEMS and Phillip Securities (HK) Ltd is not liable for any losses, costs or damages howsoever incurred as a result of the use of this service, Information is accurate at time of printing and is subject to change without notice.

1.4 Help Desk

If you have any difficulties using our Mobile platform or need additional information on our services, please call our customer service hotline at (852)22776661.

2. Getting Started

2.1 Login









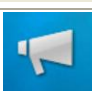


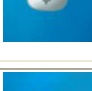
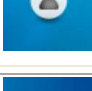

Function and Usage

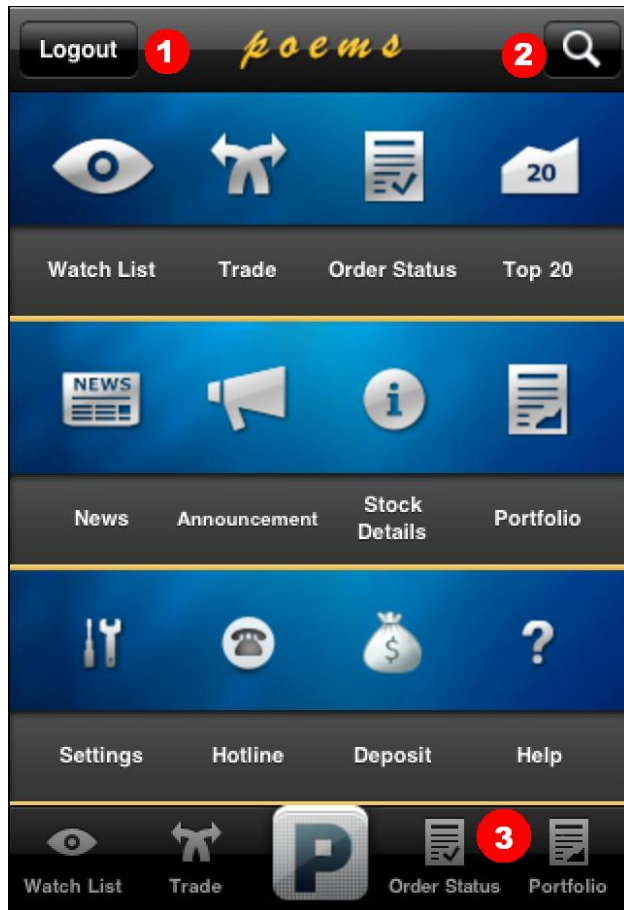
1. User ID	For user to key in the POEMS account number.
2. Password	For user to key in their POEMS account password.
3. Sign In button	After keying in the User ID and Password, user can tap on the Sign In button to login POEMS Mobile platform.
4. Terms and Condition	Please read the Terms and Condition before using the system.
5. Hotline	For user to tap on the icon to call customer services hotline directly.

2.2 Menu Page

Menu page displays all the various modules available in the POEMS Mobile platform.

List of Icons

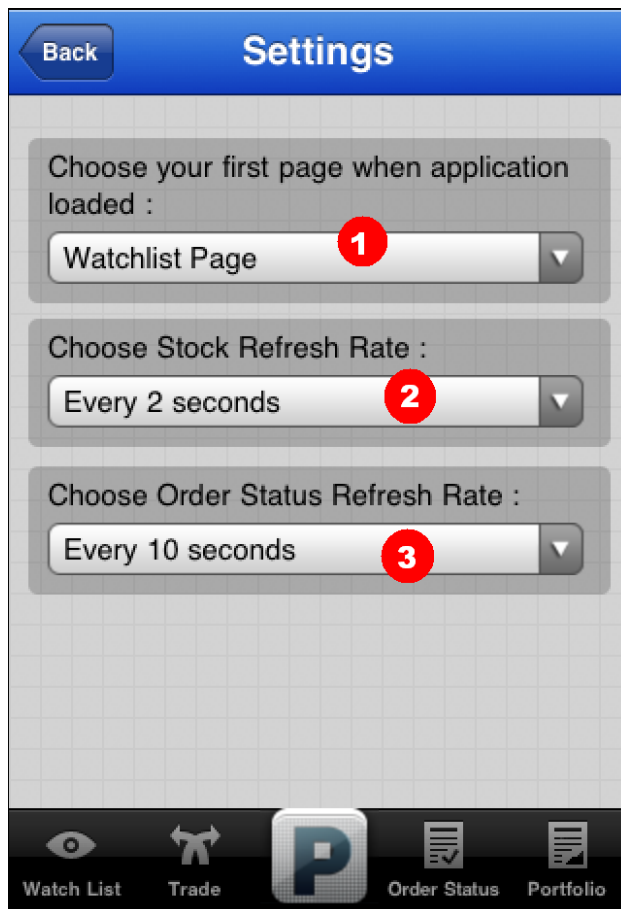
Icon	Name	Function
	Watchlist	List out the selected stocks
	Trade	The Trade module allows user to search and submit trades for the counters of interest.
	Order Status	The Order Status module will display the list of orders that are submitted today and past orders.
	Portfolio	The Portfolio showing client holdings, cash balance and bonus point.
	Top 20	The Top 20 module will display the top 20 list of stocks by volume, gainer, and loser
	Stock Details	The Stock Details module provides a comprehensive source of information of the selected counter.
	Announcement	The Announcement module displays a list of latest announcements that are posted on POEMS Mobile platform
	Settings	The Settings module will allow user to set their preferences.
	Deposit	The Deposit module will display the deposit procedure and bank account information
	Hotline	Clicking on the Hotline icon will dial the POEMS Customer Service Hotline.
	Help	The Help module will redirect user to the Help/Support page.
	P button	At any time when you click on the P button, it will bring you back to the menu page.



Function and Usage

1. Logout	Clicking on the “Logout” button will log the user out of the platform.
2. Search	Clicking on the search will bring the user to the search page to search for any counter of interest.
3. Menu	A shortcut menu that is displayed at the bottom of each page for quick access to various functions.

2.3 Settings Page



Function and Usage

1. Landing page	User may select the preferred landing page (by default is the P menu page).
2. Stock Refresh Rate	User may select auto refresh rate for price (Only for real-time user).
3. Order Status Refresh Rate	User may select the order status refresh rate.

3. Using the System

3.1 Trade

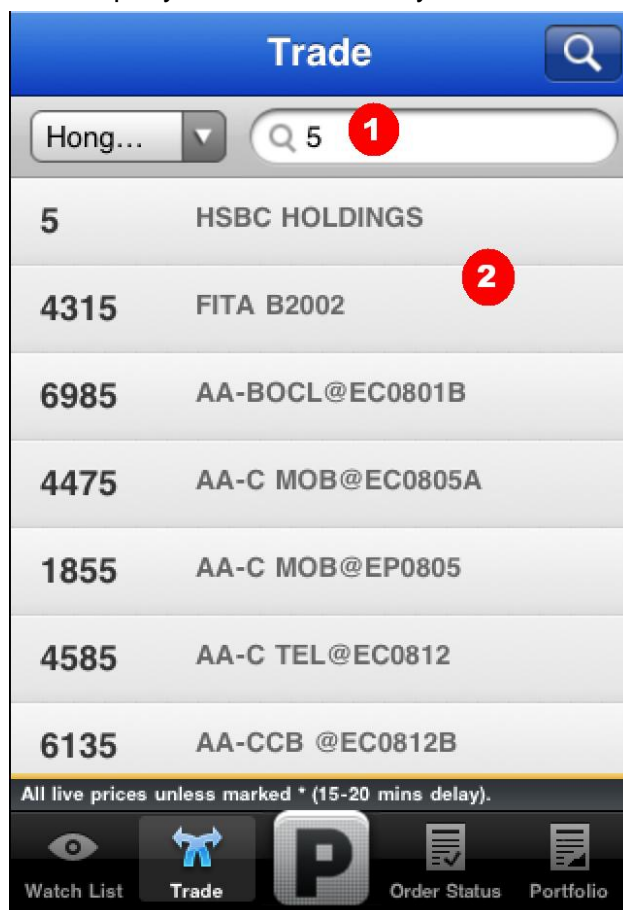


The Trade module allows user to search and submit trades for the counters of interest.

3.1.1 Search Trade

The Search Trade page will be activated when the user clicks on the trade button without any counter selected.

The user can key in the counter of interest in the Search Input box and a list of related results will be listed on the Results list. The search will conducted with reference to the company name and stock symbol.

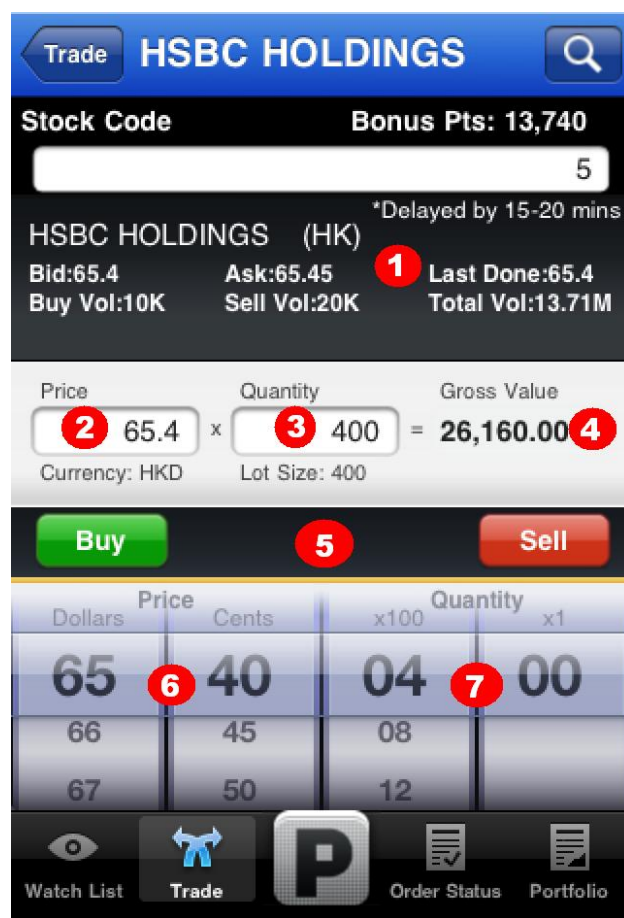


Function and Usage

1. Search Input Box	For user to key in a value for the query.
2. Results List	This panel will display the details of the selected announcement. Tap on the announcement item to view the announcement details.

3.1.2 Trade Submission

The Trade Submission page is for the user to submit trades for the selected counter.

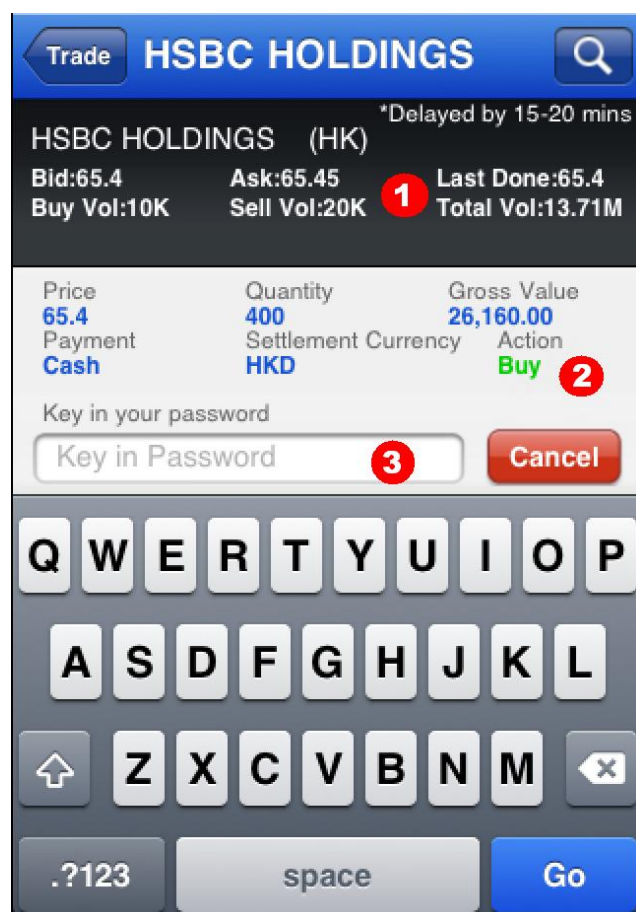


Function and Usage

1. Price Information	This panel will display the information of the counter selected. Information displayed is live streaming data.
2. Price	For user to key in the price for the order submission.
3. Quantity	For user to key in the quantity for the order submission.
4. Gross Value	Equals to: Price x Quantity. Automatically calculated by the system.
5. Buy/Sell	Tap on 'Buy' or 'Sell' button to proceed to Order Confirmation page.
6. Price Roller	Roller function allows user to select the price from a set of predefined values.
7. Quantity Roller	Roller function allows user to select the quantity from a set of predefined values.

3.1.3 Order Confirmation

The Order Confirmation page is used as a confirmation check for the submitted order. The user is required to check the order input and key in the password to confirm submission of order.



Function and Usage

1. Price Information	This panel will display the information of the counter selected. Information displayed is live streaming data.
2. Order Submitted	This panel will display the order that has been keyed in previously. For user to review/verify the inputs keyed-in in the trade submission page.
3. Password Input	For user to key in the account password for the order submission. The user will be redirected to the Order Status module after the order is submitted.

3.2 Order Status

The Order Status module will display the list of orders that are submitted today and past orders.

3.2.1 View Order Status

The Order Details page allows the user to view the details of the order. The user can do withdrawal or amendments of the orders here.

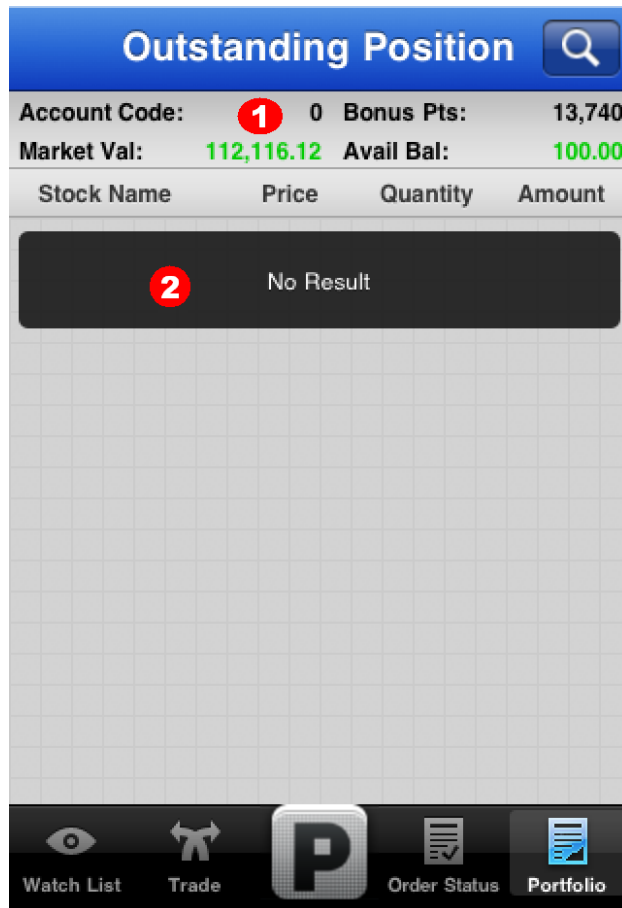


Function and Usage

1. Today Orders	This tab will display a list of today orders.
2. AE Orders	This tab will display a list of today AE orders.
3. Title Bar	Tap on the particular column and user will be able to do sorting (based on the submitted time and status).
4. List of Orders	Tap on any particular order to view the order details.
5. Order Details	This panel will display the details of the order submitted.
6. Withdrew Order	Tap on the buttons will allow user to conduct an withdrawal.
7. Amend Order	Tap on the buttons will allow user to conduct an amendment.

3.2.2 Portfolio

The Order Status module allow user to check the position, market value, bonus point and available balance. All data will be update automatically.

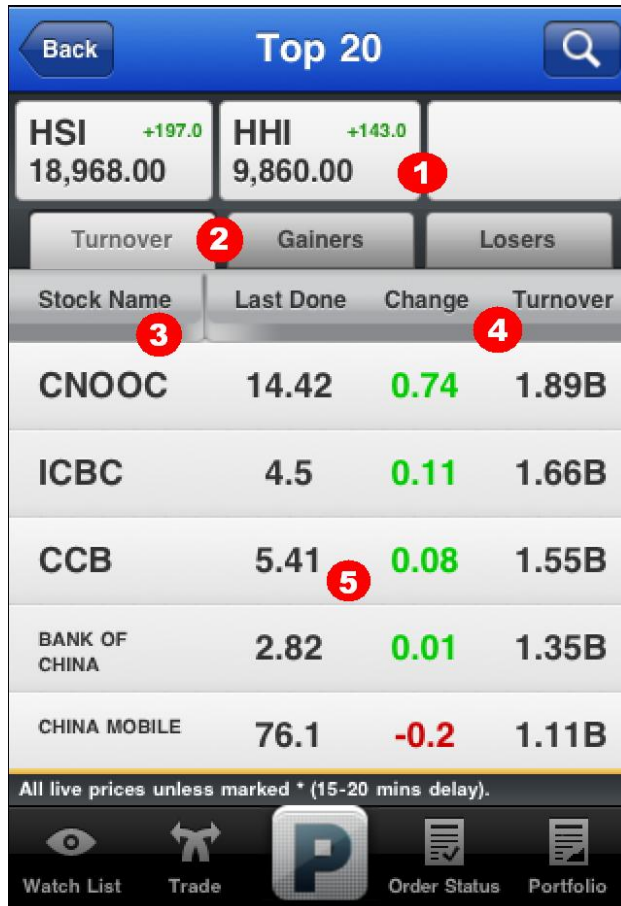


Function and Usage

1. Portfolio Information	This will show the account number, bonus point, market value and available balance.
2. Position List	This will display the client holding and provide information such as closing price, quantity and market value.

3.3 Top 20

The Top 20 module will display the top 20 list of stocks by volume, gainer, and loser.



Function and Usage

1. Index Panel	This panel will display Hang Seng Index and Hang Seng China Enterprises Index.
2. Top 20 Tabs	For user to choose between the top 20 lists. The list includes Top 20 volume, Top 20 gainer, Top 20 loser and Market Indices.
3. Company Name Header	Tap on the Company Name header to toggle between Company Name and Stock Symbol/Exchange.
4. Price List Header	Tap on the header to change the header/title. Available selection: Last Done, Change, Volume(K), Buy, Sell, Open, High, Low, Time.
5. Display Area	Swiping left/right will switch between the different lists of Top 20s.

	<p>Tap on the company name to view Stock Details page of the selected counter.</p> <p>Tap on the prices or figures will redirect user to the Trade Submission page with the stock information already filled in.</p>
--	--

3.4 Dow Jones News

Dow Jones News Module allow user to check the latest news.



Function and Usage

1. Categories	Display the category of news.
2. News List	User clicks on the news and view content.
3. News Content	It displays the news content.

3.5 Watchlist

The Watchlist module will display the user subscribed watchlist. Each account can store up to 5 different watchlists with each watchlist containing up to 20 different counters.

3.5.1 View Watchlist

The View Watchlist page displays the selected watchlist details.

**Note: Watchlist may contain counters with both live prices and delayed prices. Counters with delayed prices will be denoted with (*) character. Delayed prices will be about 15-20mins.



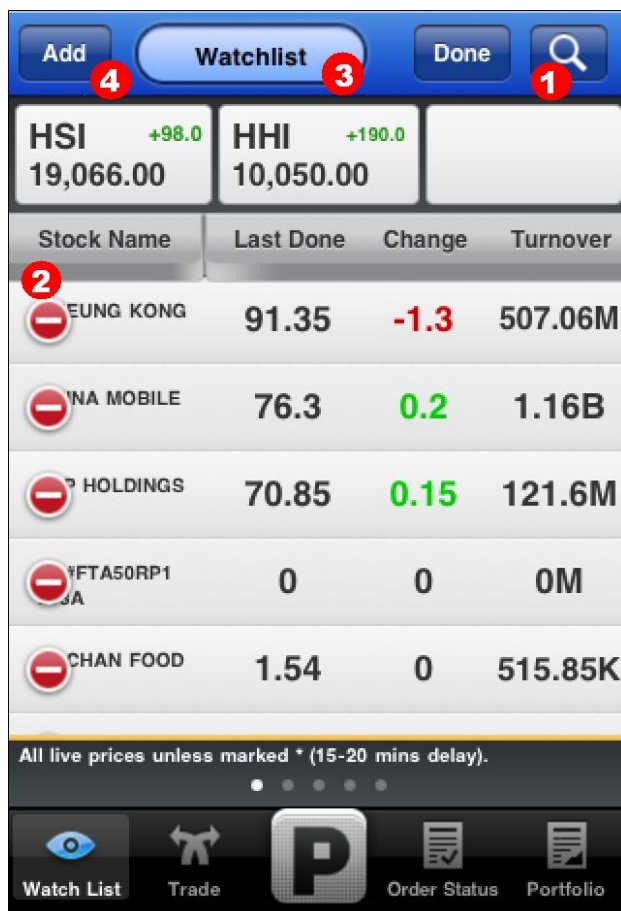
Function and Usage

1. Edit Button	Tap on Edit button will redirect to Edit Watchlist page of that selected watchlist.
2. Indices Panel	This panel will display Hang Seng Index and Hang Seng China Enterprises Index.

3. Company Name Header	Tap on the Company Name header to toggle between Company Name and Stock Symbol/Exchange.
4. Piece List Header	Tap on the header to change the header/title. Available selection: Last Done, Change, Volume(K), Buy, Sell, Open, High, Low, Time.
5. Display Area	Swiping left/right will switch between the different watchlists. Tap on the company name to view Stock Details page of the selected counter. Tap on the prices or figures redirect user to the Trade Submission page with the stock information already filed in.

3.5.2 Edit Watchlist

The Edit Watchlist page allows user to rename watchlist, add, remove and re-arrange the list of stocks.



Function and Usage

1. Add Stock Button	Tap on the magnifier button to search stocks. Select one particular stock and it will be added into the current watchlist.
2. Remove Stocks	Tap on the small red icon to remove stock from watchlist.
3. Rename Watchlist	Tap and enter a new name to rename watchlist. Watchlist name can only contain alphanumeric characters and spaces
4. Add Button	Tap on "Add" button to save all the changes made

3.6 Stock Details

The Stock Details module provides a comprehensive source of information of the selected counter. It includes the current last done price, and chart on the counter selected.

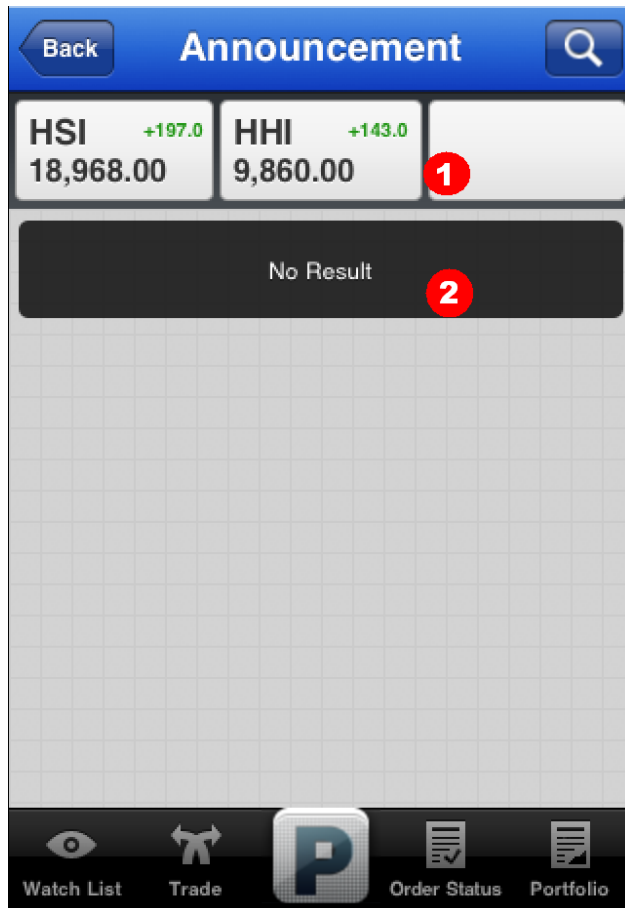


Function and Usage

1. Search	For user input the stock code or name and selected related stocks.
2. Stock Information	This module display the stocks information such as last done price, Bid/Ask price...etc.
3. Chart	This panel will display the chart of the selected counter User can select the range of 1day, 1week, 1month, 3months, 6months, and 1year.
4. Dow Jones News	This panel display the real-time news provided by Dow Jones.
5. Trade	Click on this button to go into trade page.
6. Add to Watchlist	Click on this button will add the stock into watchlist.

3.7 Announcement

The Announcement module displays a list of latest announcements that are posted on POEMS Mobile platform.



Function and Usage

1. Indices Panel	This panel will display Hang Seng Index and Hang Seng China Enterprises Index.
2. Announcement Details	This panel will display the details of the selected announcement. Tap on the announcement item to view the announcement details.

4. Help

Any changes from the above will not be further notified. Phillip Securities (Hong Kong) Limited reserves all rights to revise/ amend the abovementioned arrangements/ information.

~END~